



Maybe your lens is scratched?

The Averard Hotel, 10 Lancaster Gate, London W2 3LH

PV Saturday 25 June, 5-8pm

Exhibition runs 24 June to 24 July 2016

Open Thu-Sun 12-6pm, and by appointment

Curated by Bianca Baroni and Alex Meurice

Matt Ager // Jonathan Baldock // Becky Beasley // Neil Haas // May Hands //
Thomas Hutton // Michael Iveson // Lauren Keeley // Lawrence Lek //
Ben Sansbury // Marco Strappato // Amy & Oliver Thomas-Irvine //
Felix Jung & Marc Einsiedel, We are visual

'Maybe your lens is scratched?' hinges on a relationship between space and image disrupted by economic and political changes (rising inequality, international capital, privatization of space, shell corporations). Architectural space, as it is experienced and circulated, is flattened into images. In turn, images are projected onto and into buildings. The city grows a new skin, a screen onto which we project our desires of the future in the language of an imagined past. Polarised glass, glossy brochures, Instagram feeds, trompe l'oeil architecture, façadism, tax codes and ideology made stone. Each twist of the screw restages our experience of space as an *act of looking*. The ease with which we can 'picture' ourselves in a space motivates our evaluation and valuation of the same space.

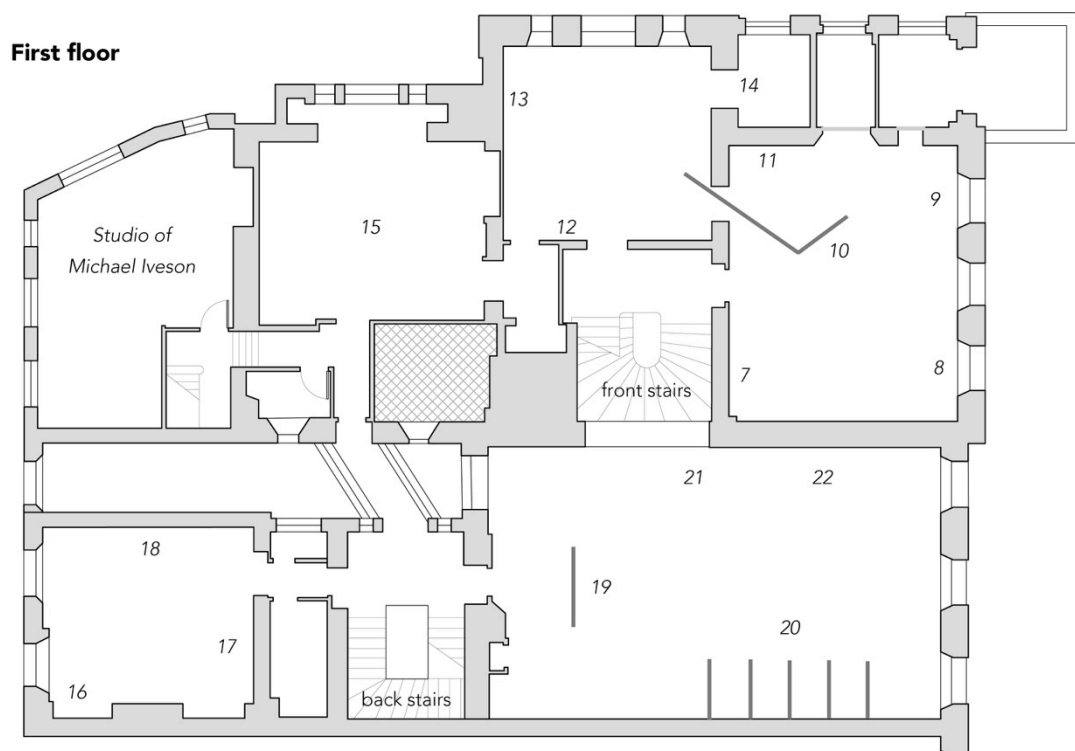
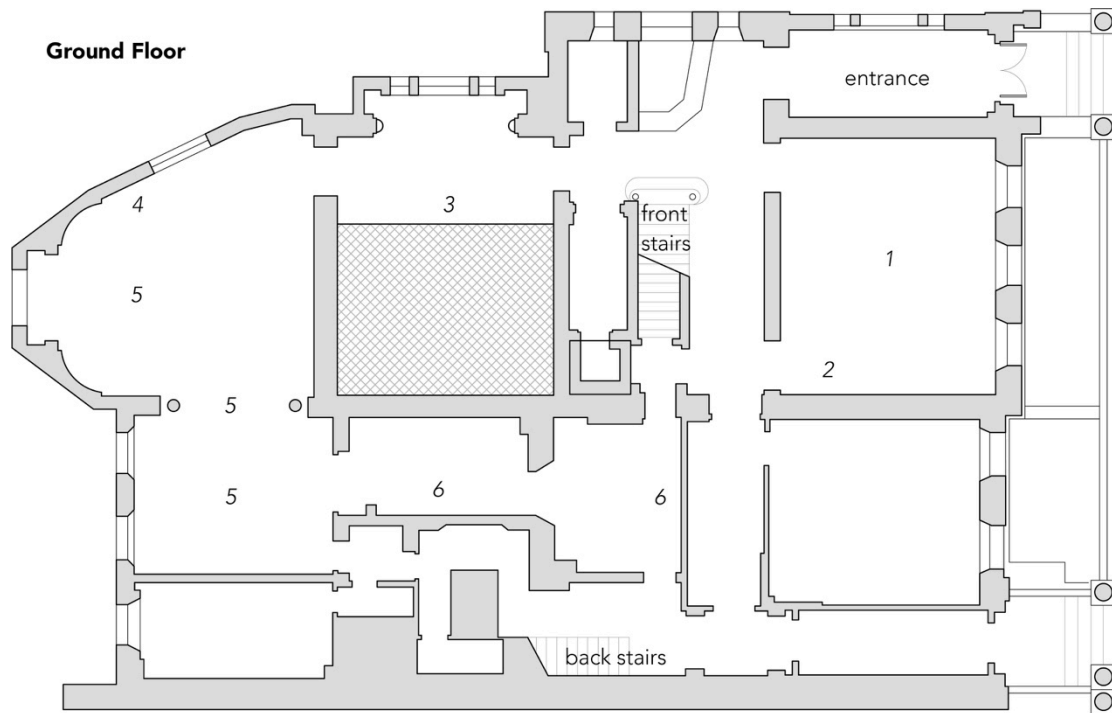
A concrete wall, three columns and a recessed corner, fresh from rain and stained by the traffic: could this be a potential space? Not quite, but maybe my lens is scratched? Felix Jung and Marc Einsiedel are in London to extend their project *Potenzieller Raum*, previously executed in Hamburg and Brussels, for this new group exhibition at the Averard Hotel. Cataloguing and re-representing the 'lost' corners of the city as potential spaces for subcultural, collective and alternative forms of living, the artist duo 'We are visual' operates on the edge of the invisible and the visible, the real and the ideal. Their rhetorical question goes to the heart of this exhibition's attempt to intercede in the fluid exchange of sight and space.

The Averard Hotel, a grand nineteenth century mansion, disused while awaiting renovation into luxury apartments, is a palimpsest of London's history, an "echo-chamber of the whole politic" (Richard Wentworth). It embodies the ceaseless folding and unfolding of image into space, and vice versa, a crease in the smooth surface of the city, an essay on the history of taste. The Averard Hotel hosts fifteen artists whose work questions our familiarity with experiencing space through image alone.

We would like to thank the artists and their representatives for their kind support.

slate
projects







List of works

1. Becky Beasley, *Astray (Part II): Smoking*, 2016, interactive installation (smoking room), mixed media
2. Becky Beasley, *Brocken IV (Bernhard now embarked on telling me about the history of his broken window handle and that he had been searching all over Vienna to find a duplicate)*, 2009, black American walnut, brass, steel. Courtesy of Laura Bartlett Gallery, London
3. Neil Haas, *Yellow and blue breakfast*, 2014, acrylic on paper & acrylic on aluminium blind
4. Lauren Keeley, *Ode on an Urn (Newcomb/Wedgwood)*, 2016, walnut, wenge, acrylic and linen on board
5. Thomas Hutton, *Portal, Key, Armature*, 2016, wooden armature, plasterboard, acrylic siloxane render, artificial pigment, polythene sheets
6. Lawrence Lek, *Memory Palace (Tabularium)*, 2014, HD interactive video simulation and video loop [originally commissioned for 'Tabularium' at Slopes, Melbourne, Australia, curated by Alana Kushnir]
7. Matt Ager, *Long handle Reach Shoe*, 2016, Plaster, acrylic, wallpaper and back scratcher
8. Neil Haas, *Daydreams*, 2016, acrylic on polyester
9. Neil Haas, *Bather reclining near water*, 2016, acrylic on polyester
10. Michael Iveson, *Apartment slicker (Averard Hotel)*, 2016, oil on bubblewrap
11. Michael Iveson, *Ideal home (with watches)*, 2016, oil and newsprint on plywood
12. May Hands, *Beneath the Averard Walls (Pink, iridescent and orange)*, 2016, designer packaging, cellophane, plastic taping, fruit and vegetable packaging, found papers, screen-printed papers and netting. Courtesy of T293 Roma
13. Ben Sansbury, *Untitled (Splint splint)*, 2016, aluminium, concrete, steel
14. Ben Sansbury, *Untitled (Laocoön)*, 2016, aluminium, concrete, steel
15. Felix Jung & Marc Einsiedel, *We are visual, POTENTIAL SPACE (LONDON)*, 2016, wood, foil, pigment, metal, smoke, slide projection, digital print on Hahnemühle paper with walnut wood artist frame
16. May Hands, *Averard Wardrobe Painting, (Purple, blue and yellow)*, 2016, designer packaging, cellophane, plastic taping, fruit and vegetable packaging, found papers, screen-printed papers and netting. Courtesy of T293 Roma
17. Matt Ager, *Wear me, Work me, Love me*, 2016, Acrylic, wallpaper, ceramic and shorts
18. Lauren Keeley, *Bookshelf*, 2015, acrylic, walnut and linen on board. Courtesey of Frutta, Rome
19. Amy & Oliver Thomas-Irvine, *Milieu*, 2016, mild steel, inkjet print, celotex
20. Amy & Oliver Thomas-Irvine, *5 Volt*, 2016, mild steel
21. Marco Strappato, *Untitled (Sunset in Utopia)*, 2014, C-type mounted on glass
22. Jonathan Baldock, *The Soft Machine (Performance costume 1)*, 2014, fabric